



Network Guide User Manual

NETWORK INSTALLATION

Installing the programs

You can change the default directory to any other name you wish to use. We strongly recommend letting the program install into the default directory for technical support reasons. Too often we receive calls for assistance, which requires accessing the program directory only to find that the default directory does not exist and the user does not know where it is.

Network Installation

For a network installation you will need to install the program on the server computer and also on the computers that will run the program. Each computer that will run the program must have the software installed on that computer. The software cannot be installed in different folders on the server computer. The software cannot be run from one folder on the server by several workstation computers.

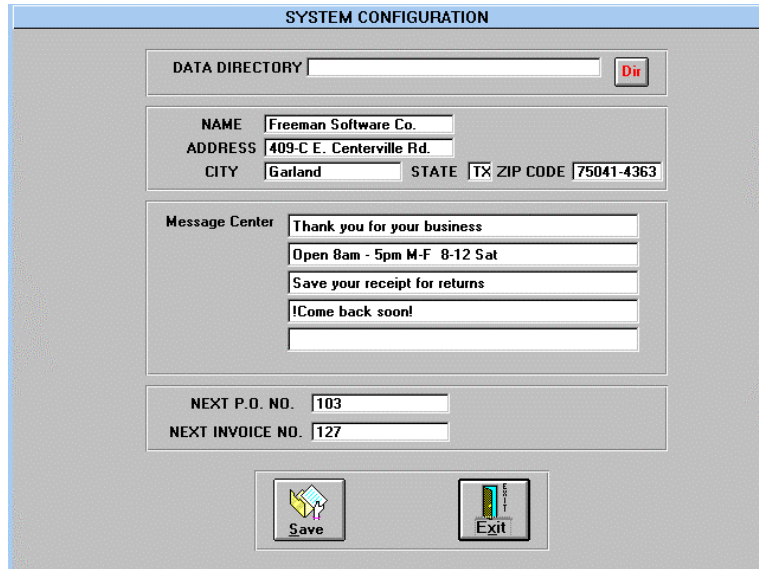
Why change data file paths?

The program defaults to the local directory that contains the programs for the data files. When using the network version you will need to select "Setup" on the menu bar and choose the drive and sub-directory on the first line at the top of the screen for the directory on the server computer, which has the data files.

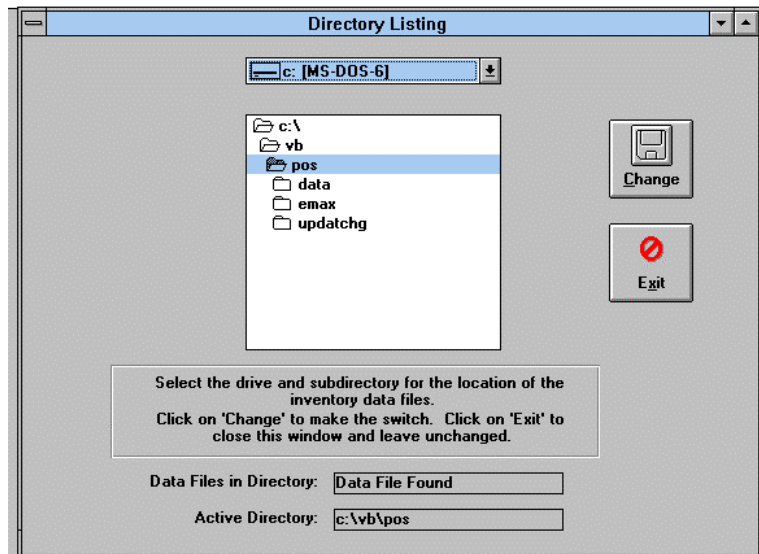
Each workstation computer will then change the drive path to point to the server's drive. For network installations the program disks must be installed on each computer.

Click on "Setup" on the menu bar.

Click on the "Dir" button at the right of the "Data File Directory" line.



A drive selection window pops up. This is used to verify the location of the data files before attempting the change.



When installing a network version, install the program disks on all computers including the server computer. Each computer will have programs and sample data files. Once this is completed you can access the configuration screen and change the drive path on each of the workstation computers.

Select the drive and sub-directory on the server that contains the data files. Now all computers will ignore the data files on their local drive and access these on the server computer.

You may need to exit the program and restart your application for the data path changes to take effect as some of the data files may already be opened.

Single and network versions

Single-user versions can only accept data input from one computer and will not share data files. The network version will accept all data input from multiple computers.

Getting help

If you need assistance, please call technical support at **972-840-1119**.

If you call on the 800 number you will be charged for the assistance. A credit card is required at the time of the call. Please be ready to tell us which program you are using since we market numerous different programs in both DOS and Windows.