



Printer and hardware configuration guide

Hardware configuration

Select "Setup/Hardware changes" from the menu bar. This screen is used to select the type of printer and cash drawer being using with the program.



Using 80 column printer for invoices

If a printer driver is displayed in the text box to the left of the "Select" button click on "Clear Printer" to remove the selection. If you do not have this driver the "Select" button will not display the printer selection window. When the selection window appears click on the printer driver you will use for reports. Click "OK" to keep the selection. Click "Save" on the hardware setup screen.

Invoices can be printed on both the 80 column and receipt printer on demand if both have been selected.

If you are using an 80-column dot matrix printer for invoices you should install the "Generic Text" driver for LPT1. Select "80 columns" under Printer Columns for the format. If "No Printer" is selected the invoice will not be printed. Select this driver on the hardware setup screen.



Installing the receipt printer generic driver on Windows 95/98/2000

The inventory program must be capable of changing printer drivers if you will be using a receipt printer for printing sales tickets. Some driver must be used in order to print. If the active driver is a laser driver the receipt printer will print garbage.

Windows has a generic text driver on the CDROM or diskettes that can be installed.

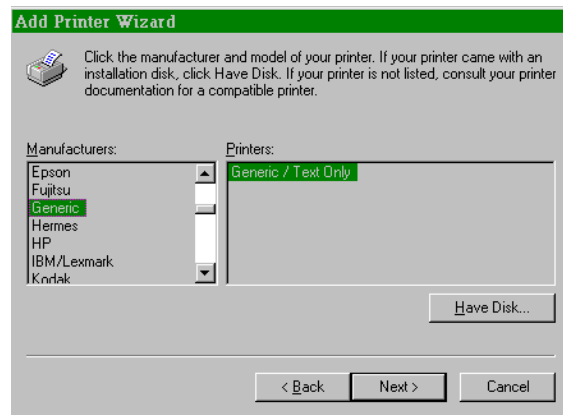
Select "My Computer".

Select "Printers".

Select "Add Printer".

To use this with the tape receipt printer select "Generic text only".

Select a printer port that corresponds to the connection on your computer.



Choose LPT1 or LPT2 to use with a parallel printer model.

Choose COM1 or COM2 for use with a serial printer model. Do not change any other settings in the printer setup. Do not modify baud rate, XON/XOFF, width of columns or anything else. Use the system defaults.



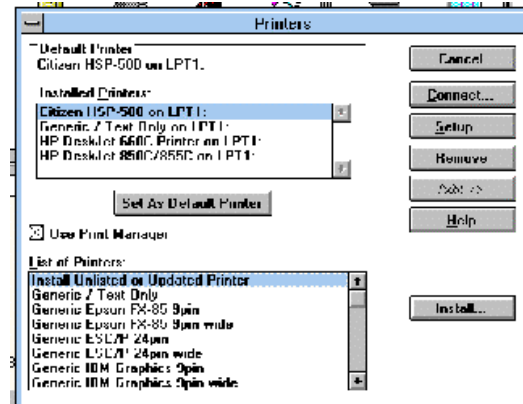
Installing the receipt printer generic driver on Windows 3.11

Select the control panel and click on printers. Select "ADD" to add a driver. Select "Generic/Text Only" for the driver. Windows will prompt for the disks it wants to install the driver. This driver sends data to the printer without any graphics formatting.

Select a printer port that corresponds to the connection on your computer.

Choose LPT1 or LPT2 to use with a parallel printer model.

Choose COM1 or COM2 for use with a serial printer model. Do not change any other settings in the printer setup. Do not modify baud rate, XON/XOFF, width of columns or anything else. Use the system defaults.



Setup of a receipt printer

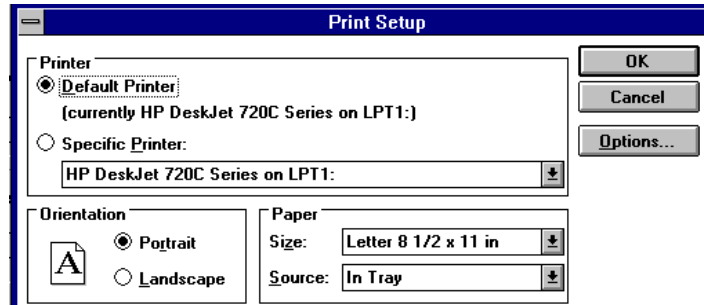
Click on "Test Printer" to print a test invoice.

The inventory program is shipped without any printer drivers loaded. When you run the program it defaults to the first Windows printer driver on the list of drivers.

Select "Setup" on the menu bar. This drops down a window of several choices.

Select "Hardware" to open the hardware configuration screen.

Look at the top left of the screen. Click on "Use receipt printer" to activate it. This opens the printer selection screen. You would normally click on "Select" on the left side of the screen "receipt printer" to change this at a later date.



This opens a "printer dialog window" from which you can click on the down arrow to open a window of printers on your computer.

Click on the printer you want to use for regular reports. The "Specific Printer" radial button will be selected. Click on "OK" to exit with your selection.

If you will be using a receipt printer, click on "Printer Setup" under the "Receipt Printer Setup" area. Also click on "Use Printer". Select the "Generic/Text only" printer and click on "OK" to exit the screen.

Use the "Ports" option on the print manager to select the serial or parallel port on which you will have the receipt printer connected.

Click on the "Test Printer" button to test the output to the receipt printer.

Cash drawer support

If you have a cash drawer attached then click on the radial button under "Cash Drawer" to select the port where it is connected. Click on "No Drawer" if you do not have a drawer.

If a cash drawer is attached to the computer's serial port select "COM1" or "COM2" under "Cash Drawer". Two options are available to control opening the drawer depending on the brand of drawer. The program sends a bell signal, a CHR\$(7) to open the drawer.

If a cash drawer is connected to the tape receipt printer then select the same port being used by the receipt printer.

Click on "Test Drawer" to test the drawer to be sure it will open.

Taxable option

You can choose to make all sales default to TAXABLE by entering a "Y" in the field provided.

You can choose to make all sales default to NON-TAXABLE by entering an "N"

If you leave the field blank the program will not default to TAXABLE or NON-TAXABLE, but will default to either what is on the stock number or in the customer file if a customer is selected.

Save your changes

Click on "Save" prior to exiting this screen to save your changes.